

WATCH MOVEMENT  
INSTRUCTIONS

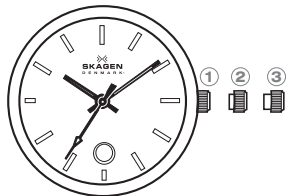
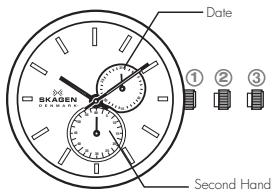


**SKAGEN**

D E N M A R K •

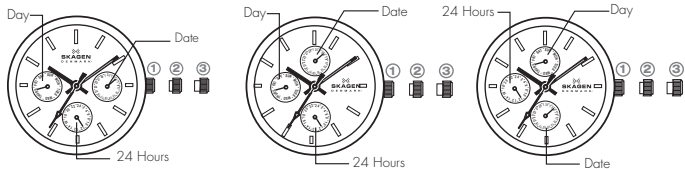
the elements of danish design

# STANDARD INSTRUCTIONS



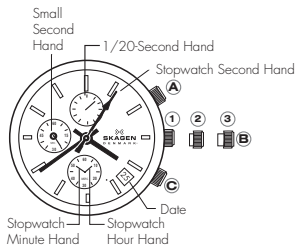
- A. Pull the crown out to the ② position.
- B. Rotate the crown to set the date.  
(Either clock wise or counter-clockwise depending on the model)
- C. Pull the crown out to the fully extended ③ position and rotate to set the desired time.
- D. Push the crown back to its normal ① position and the date and time are now set.

# MULTIFUNCTION

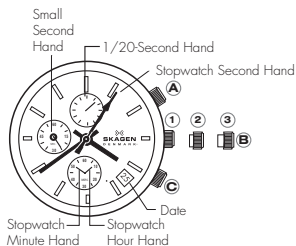


- Pull the crown out to the middle ② and rotate crown to set the date. (Either clockwise or counter-clockwise depending on the model)
- Pull the crown out to the fully extended ③ position and rotate clockwise cycling through hours to set day. Then set time.
- Push the crown back to its normal ① position and the day, date and time are now set.

# CHRONOGRAPH



1. Press down to start and stop the stopwatch. Ⓐ
  2. Controls day, date and time functions. Ⓑ
  3. Press down to stop, continue, and to reset stopwatch. Ⓒ
- A. Pull the crown out to the ② position and rotate crown to set date. (Either clockwise or counter-clockwise depending on the model)
- B. Pull the crown out to fully extended ③ position and rotate to set desired time.
- C. Push the crown back to its normal ① position and the date and time are now set.



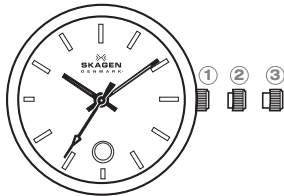
## CHRONOGRAPH RESET

This should only be performed when second hand does not return to 0 second position.

- Pull the crown out to the middle or full extended position.  
(② or ③ depending on the model)
- Press the **A** for 2 seconds to select the stopwatch hand(s) that need to be adjusted.
- Press the **B** repeatedly to place the selected stopwatch hand(s) at zero second position.

The hand(s) move(s) quicker if the **B** is kept pressed.

# BIG DATE



- A. On the first day of a new month the date has to be manually set from 31 over 39 to 1 by the user. The date change (e.g. from 21 to 22) has a long changing time. (2-3 hours) instead of the normal 1 hour changing time.
- B. To set second digit: Pull crown out to the ② position and rotate counter-clockwise to set. To set first digit: Pull crown out to the ① position and rotate clockwise to set.
- C. To set time: Pull crown out to the fully extended ③ position and set to desired date.
- D. Push the crown back to normal ① position and the date and time are now set.

# 3 HAND DAY AND DATE



## SETTING THE TIME

- Pull the crown out to the ③ position.
- Rotate the crown to desired time.
- Push the crown back to normal ① position and the time is set.

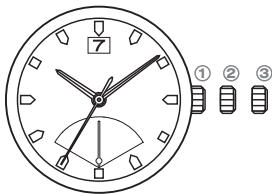
## SETTING THE DATE

- Pull the crown out to the ② position.
- Rotate the crown counter-clockwise to set date. \*If the date is set between the hours of around 9:00 PM and 1:00 AM, the date may not change on the following day.
- After date has been set, push the crown back to normal ① position and your date is set.

## SETTING THE DAY OF THE WEEK

- Pull the crown out to the ② position.
- Rotate the crown clockwise to set the day. \*If the day is set between the hours of around 9:00 PM and 1:00 AM, the day may not change on the following day.
- Push the crown back to normal ① position and the day of the week is set.

# RETROGRADE DUAL TIME



## SETTING THE TIME

- Pull the crown out to the ② position.
- Rotate the crown to desired time.
- Push the crown back to normal ① position and the time is set.

## SETTING THE DATE

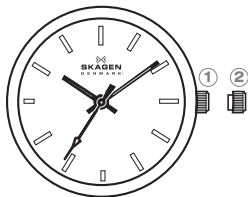
- Pull the crown out to the ② position.
- Rotate the crown clockwise to set the date.  
\*If the day is set between the hours of around 9:00 PM and 2:00 AM, the date may not change on the following day.
- Push the crown back to normal ① position and the date is set.

## SETTING THE 2ND TIME (24 HOURS)

- Pull the crown out to the ② position.
- Rotate the crown counter-clockwise to set the 2nd time.
- Push the crown back to normal ① position and the 2nd time is set.



# SOLAR POWERED



#### WARNINGS / NOTIFICATIONS FOR CHARGING:

Recharge warning function: Second hand moves at 2-second intervals. The second hand changes to a two second interval movement to indicate insufficient recharging. After exposing the watch to light, recharging takes place and the watch returns to one second interval movement.



Time setting notification: Second hand moves irregularly / 1 sec-1 sec- 2sec. When the second hand moves irregularly (1 sec-1 sec- 2sec), it tells that the time setting was not done after the watch stopped (due to insufficient charge), and will continue to do so until the time is set. It is advised to set the time after each sufficient charge.

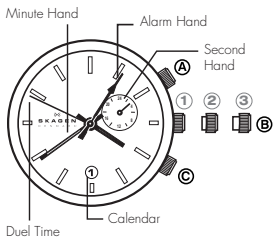
#### APPROXIMATE TIME REQUIRED FOR CHARGING:

Charging Source	For Full Charge	For 1 Day Operation
20cm (8in.) under a fluorescent light	484 hours	2.8 hours
Outside, Cloudy conditions	31 hours	11.4 minutes
Outside, Sunny conditions	16.9 hours	6.0 minutes

## SETTING THE TIME

- A. Pull the crown out to fully extended position ② and rotate crown to set desired time. Push the crown back to its normal position.
- ⌘ This watch has a rechargeable cell which is charged by exposing the watch dial to light such as direct sunlight or fluorescent lamps.
  - ⌘ Expose the watch dial towards direct sunlight for several hours at least once a month.
  - ⌘ Do not charge watch at a high temperature (about 60°C/140°F or higher).
  - ⌘ After taking off the watch, put it in a position so that the dial is exposed to bright light, such as by a window.
  - ⌘ Before storing the watch in a dark place for an extended period of time, be sure to charge it fully.

# GMT/ALARM



## SETTING THE TIME

- A. Pull the **(B)** crown out to the fully extended position **(3)** and rotate the crown.

## SETTING THE DATE

- A. Pull the **(B)** crown out to the middle position **(2)** and rotate the crown clockwise.  
B. Push the **(B)** crown back to its normal position. The date and time are now set.

## SETTING THE SECOND TIME ZONE

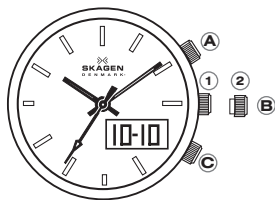
- A. Pull the **(B)** crown out to middle position **(2)** push and hold down A push-button to set the hour hand.

## SETTING THE ALARM

- A. Pull the **(B)** crown out to middle position **(2)** and rotate crown counter clockwise.  
B. Use the **(C)** push-button to turn the alarm on and off, one beep means alarm is off, two beeps means it is on.

\*SETTING THE DATE CAUTION: NEVER CORRECT DATE BETWEEN 9 PM AND 12.30 AM

# ANA-DIGI



## NORMAL TIME DISPLAY

- » In regular time display mode, press pusher (A) to light up LCD light.
- » Press pusher (C) to select between modes:  
REAL TIME → ALARM → DATE → SECOND



## TIME AND CALENDAR SETTING - ANA-DIGI

1. Press pusher (C) until REAL TIME mode is selected.
2. Press and hold pusher (A) for 3 seconds to enter setting mode.
3. Press pusher (A) to select second, hour, month, date.
4. Press pusher (C) to adjust digit.
5. Press and hold pusher (A) for 3 seconds to exit setting mode.

## TIME AND CALENDAR SETTING - ANALOG

6. Pull crown (B) out to the (2) position and rotate to set the desired time.
7. Push the crown back to its normal (1) position and the time is now set.

## ALARM SETTING

1. Press pusher (C) until ALARM mode is selected.
2. Press and hold pusher (A) for 3 seconds to enter alarm time.
3. Press pusher (A) to select hour, minute, chime/alarm on/off.
4. Press pusher (C) to adjust digit.



ONEZERO.PL  
shop online